



DESCRIPTION

The LVL is our largest kit home. This brochure contains specific information with respect to the LVL home but it does not contain general information that is shared amongst all the LV Series homes. You must supplement this brochure with: *LVS Design* and *LVS Build*.

SQUARE FOOTAGE: 1st LEVEL:	Approx. 1453 sq. ft.	OVERALL DIMENSIONS 25'-1" x 59'-6"
BASEMENT:	(If applicable): Aprox.1400 sq. ft	
TYPICAL CEILING HEIGHT:	9'-0"	
CEILING HT. IN BATH/CLOSET:	Varies: 7'-0" - 8'-0"	

LVL HOME WITH A CRAWLSPACE/ SLAB ON GRADE FOUNDATION

This is the standard LVL home plan. On becoming an LV series home owner there will be many options to choose from to customize your home; to learn more read the *LVS Design* brochure.

LIVING & DINING

23'-4" x 15'-1"

MASTER BED

15'-1" x 12'-11"

2nd BED

11'-11" x 10'-1/2"

2nd BED BATH

56 sq. ft.

KITCHEN

15'-4" x 7'-6"

MASTER CLOSET

54 sq. ft.

2nd BED CLOSET

8 sq. ft.

MEDIA CLOSET

4 sq. ft.

PORCH

7'-7" x 5'-1"

MASTER BATH

70 sq. ft.

3rd BED/OFFICE

10'-1/2" x 9'-11"

LAUNDRY

56 sq. ft.

3rd BED CLOSET

4 sq. ft.



LVL HOME WITH A BASEMENT: 1st Level

This is the standard LVL home basement plan. On becoming an LV series home owner there will be many options to choose from to customize your home; to learn more read the *LVS Design* brochure.

LIVING & DINING
23'-4" x 15'-1"
MASTER CLOSET
54 sq. ft.
2nd BED CLOSET
8 sq. ft.
MEDIA CLOSET
4 sq. ft.

KITCHEN
15'-4" x 7'-6"
MASTER BATH
70 sq. ft.
3rd BED/OFFICE
10'-1/2"x9'-11"

PORCH
7'-7" x 5'-1"
STAIRWELL
56 sq. ft.
3rd BED CLOSET
4 sq. ft.

MASTER BED
15'-1" x 12'-11"
2nd BED
11'-11"x10'-1/2"
2nd BED BATH
56 sq. ft.



LVL HOME WITH A BASEMENT: Basement Level

STORAGE
23'-0" x 22'-8"
STAIR WELL
56 sq. ft.

GAME ROOM
33'-5" x 14'-11"

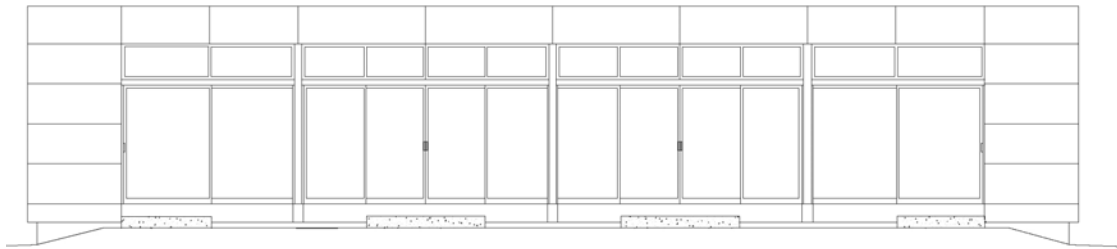
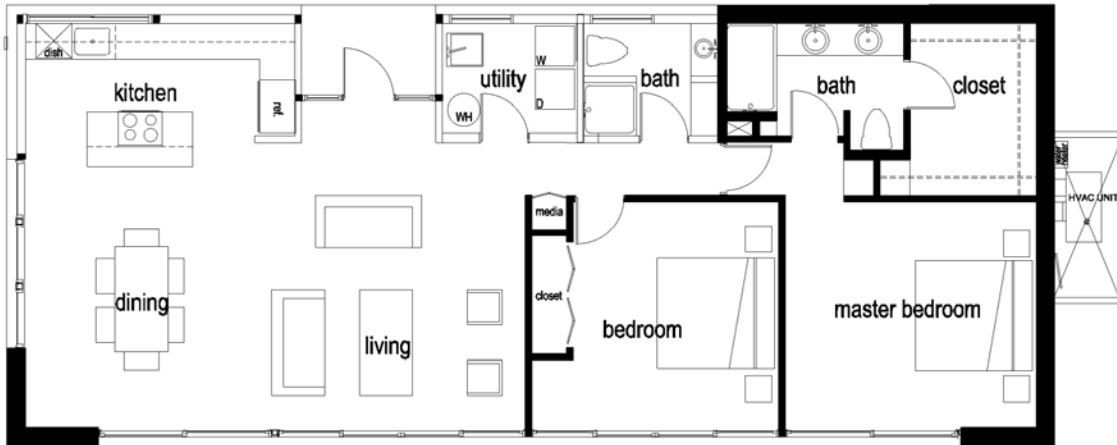
UTILITY/STORAGE
128 sq. ft.

LAUNDRY
55 sq. ft.



CUSTOM LVL HOME

You can customize all of the LV series, so long as you keep the same footprint of the kit and maintain the same ratio of shear walls. We have upgraded our posts to steel posts so that we can span longer distances and therefore have more options with respect to customization. The example below is a custom LVL where by adjusting the steel posts we enlarged the living area and the 2nd bedroom. Since some of the openings are much larger we placed a 4 panel slider, allowing you to have one large open space. For additional ideas on how to customize your LVL you can download our **LVS Design** brochure.



CUSTOM LVL HOME: BRONZE METAL COLOR

You can further customize your home with our custom colors. We have an array colors to choose from, see our **LVS Design** brochure for these colors.

