



**DESCRIPTION**

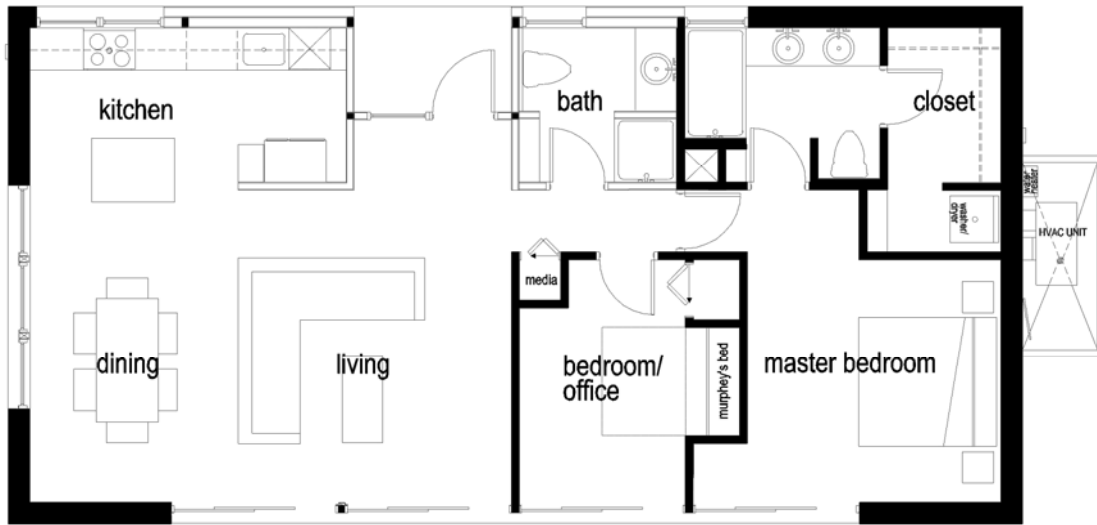
The LV150 is our kit home model that resists 150 mph windloads. This brochure contains specific information with respect to the LV150 but it does not contain general information that is shared amongst all the LV Series homes. You must supplement this brochure with: *LVS Design* and *LVS Build*.

<b>SQUARE FOOTAGE: 1<sup>st</sup> LEVEL:</b>	Approx. 1190 sq. ft.	<b>OVERALL DIMENSIONS</b> 25'-1" x 49'-1"
<b>BASEMENT:</b>	(If applicable): Aprox.1150 sq. ft.	
<b>TYP. CEILING HT. (Throughout):</b>	9'-0"	
<b>CEILING HT. IN BATH/CLOSET:</b>	Varies: 7'-0" - 8'-0"	

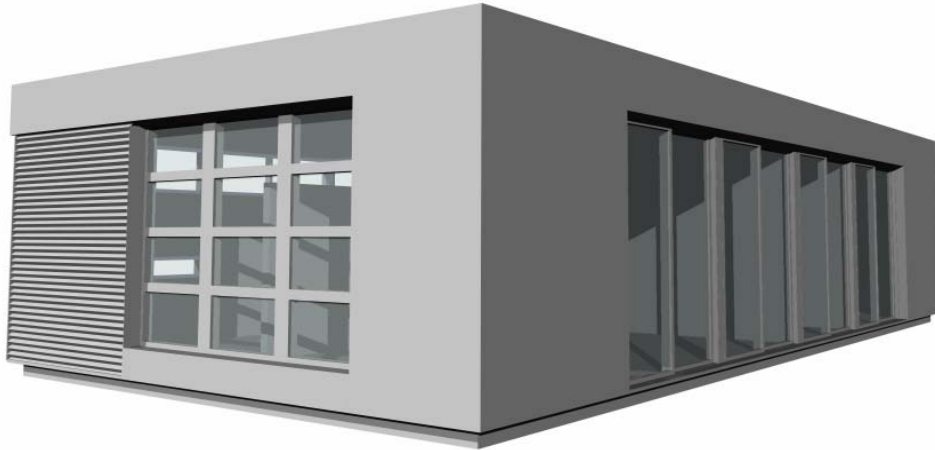
**STANDARD TWO BEDROOM LV150**

This is the standard LV150 home plan. On becoming an LV series home owner there will be many options to choose from to customize your home; to learn more read the *LVS Design* brochure.

<b>LIVING &amp; DINING</b> 23'-4" x 15'-1"	<b>KITCHEN</b> 15'-4" x 7'- 6"	<b>PORCH</b> 7'-7" x 5'-1"	<b>MASTER BED</b> 11'-10" x 12'-4"
<b>MASTER CLOSET</b> 62 sq. ft.	<b>MASTER BATH</b> 65 sq. ft.	<b>MEDIA CLOSET</b> 4 sq. ft.	<b>2<sup>nd</sup> BED</b> 12'-3" x 10'-8"
<b>2<sup>nd</sup> BED CLOSET</b> 6.5 sq. ft.	<b>2<sup>nd</sup> BED BATH</b> 57 sq. ft.		



### STANDARD LV150 RENDERING



### CUSTOMIZED LV150 HOME

You can customize all of the LV series, so long as you keep the same footprint of the kit and maintain the same ratio of shear walls. Below is an example of how you can create one large master suite in lieu of the two bedrooms.

**LIVING & DINING**  
23'-4" x 15'-3"  
**MASTER CLOSET**  
58 sq. ft.

**KITCHEN**  
15'-4" x 7'-6"  
**MASTER BATH**  
60 sq. ft.

**PORCH**  
7'-7" x 5'-1"  
**MEDIA CLOSET**  
7 sq. ft.

**MASTER SUITE**  
23'-4" x 11'-11"

